



MORALT
the core of the door

FERRO

Akustik



5-ply
faces



Exterior grade
MDF faces



Flat steel
stabilizer



Laminated
core



Robust
construction

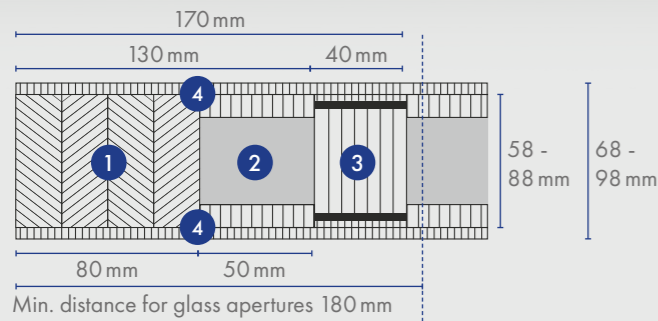


Acoustic
insulation

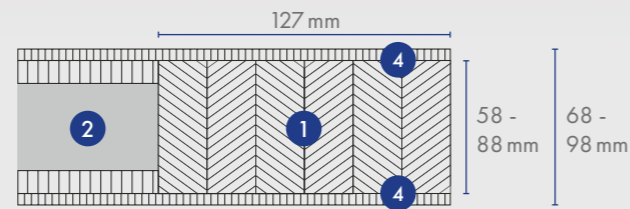
FERRO Akustik



Cross-section lock-side



Cross-section hinge-side



- 1** Framing / stiles & rails
- 2** Sandwich system with sound insulation insert and ecological wood fibre insulation
- 3** Flat steel stabilizer
- 4** Facing

Technical details

FRAME

1 Timber framing	Timber framing finger-jointed and laminated.	
	Thickness of door blank 68/78/88/ 98 mm	
	Frame width in mm	can be trimmed by
Top	127	75*
Side	lock-s. 80/hinge-s. 127	lock-s. 25*/hinge-s. 75*
Bottom	127	85*
Frieze, trim, glass aperture	Minimum distance for glass apertures is 180 mm. The frame width corresponds to the shortening dimension. When trimmed by a maximum at the bottom (85 mm) a single rebate (max. 18 mm) or fitting of drop down seal is possible.	

INNER LAYER

2 Construction	<ul style="list-style-type: none"> Sandwich construction of laminated core and sound insulation layer Surface stability through vertically aligned annual rings
Bonding	Free of formaldehydew
3 Flat steel stabilizer	Lock-side flat steel stabilizer – thermally separated and sound insulated – to absorb tractive and shearing forces. Stabilizers are glued and friction-locked with the framework.

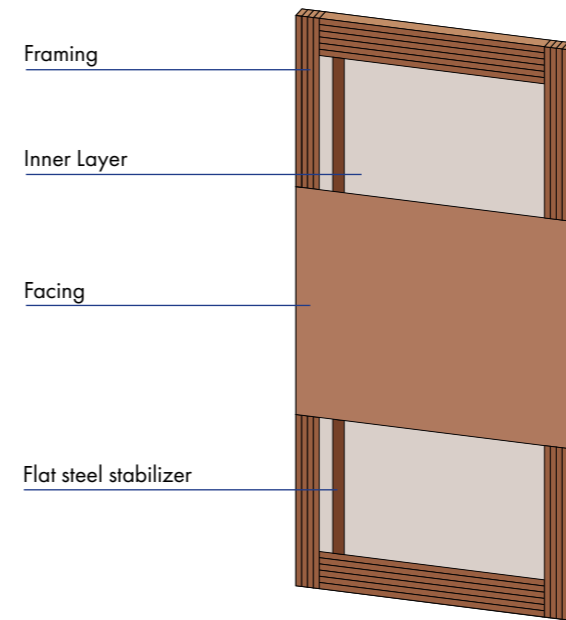
4 FACING

Bonding	Veneer plywood AW bonding according to DIN 68705-2, 5 layers (noble veneer), 3 layer (cross veneer) = individually veneerable, MDF/HDF exterior = paintable or veneerable, full-surface bonding with the overall construction, min. stress group D4 according to DIN EN 204/205 and DIN EN 14257 (WATT 91)
---------	--

EXTERNAL DOOR BLANK

Model/ finish	Trimmed edges and sanded surfaces
Processing information	The sound inlay can be processed with woodworking machines.

* with a max. rebate of 30 mm



Product Range

Thickness in mm	68 / 78 / 88 / 98	
Thickness in mm cross-veneered RV	66 / 76 / 86 / 96	
Length in mm	default	can be cut to
	2,110	1,950
	2,240	2,080
	2,370	2,210
	2,470	2,310
	2,600	2,440
Maximum length of 2,980 mm available on request.		
Width in mm	default	can be cut to
	950	850
	1,050	950
	1,150	1,050
	1,230	1,130
	1,250**	1,150

Face types

Veneer plywood: Mahogany SV, Okumé/Gabun SV, Meranti FL, Oak*, knotty Oak*, knotty Oak 3.5mm*, rustic knotty Oak cross-veneered, Pine FL/ SV, Spruce FL/SV, Larch*, knotty Larch*, white Fir, paint-grade SV.
Or: MDF/HDF-exterior**, HPL/CPL laminate

Framing / stiles & rails

Oak, Larch, Conifer wood, Redwood

*cross-grain also available **Only MDF-Exterior possible up to a width of 1,250 mm SV=sliced veneer FL=Fineline RV=rotary cut veneer
Further dimensions, sizes and facings on request.

Certification

Height in mm	bis 2,600		Maximum door leaf size: 3.2 m ²	
Width in mm	bis 1,250			
Thickness in mm	68	78	88	98
Different climate testing DIN EN 1121:2000-09	test climate c, d, e			
Tolerance classes (by using three hinges) DIN EN 12219:2000-6	3			
Thermal transfer coefficient U-value (W/m ² K) DIN EN ISO 10077-2:2012-06	1.2	1.0	0.85	0.78
Acoustic performance DIN EN ISO 717-1 R _{wp} (dB)	44	44	47	44
Burglar resistance DIN EN 1627:2011-09	RC2 / RC3*			
Weight 2,240 x 1,050 mm kg/piece	94	98	104	108

* tested & valid to H 2,470 mm

CNC-processing service

All types may be delivered CNC processed.



Any questions?

Info hotline: +49 8026 92538-11

Moralt AG

Obere Tiefenbachstraße 1
83734 Hausham, Germany

Phone: +49 8026 92538-0
Telefax: +49 8026 92538-40
Mail: sales@moralt-ag.de

