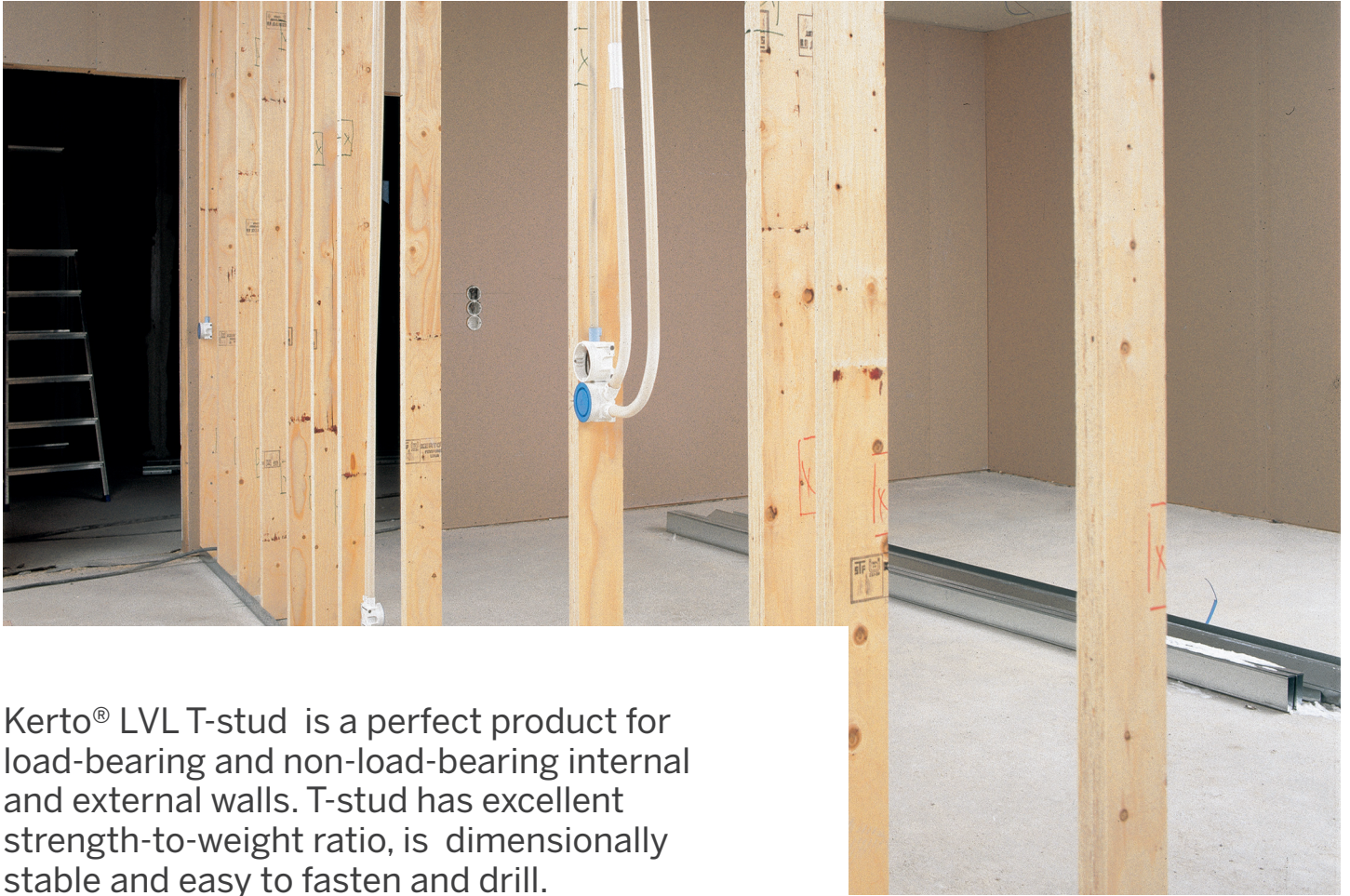


Kerto® LVL

T-stud



Kerto® LVL T-stud is a perfect product for load-bearing and non-load-bearing internal and external walls. T-stud has excellent strength-to-weight ratio, is dimensionally stable and easy to fasten and drill.

Kerto LVL T-stud is made of 3 mm thick light-weight softwood veneers. The veneers bonded with weather- and boil-resistant adhesive. The grain direction of all the veneers is the same. The light-weight product is easy to handle at construction site.

Main applications

Structural applications:

- Wall studs for internal walls
- Wall studs for external walls
- Secondary joist for floors

Industrial applications:

- Door and window frames
- Furniture
- Support structures for concrete formwork
- Packaging industry

Major advantages

- **Light-weight product, easy to handle and lift manually at construction site**
- **Excellent strength-to-weight ratio**
- **Dimensional stability improved against warp and twist**
- **Great workability and quick to install**
- **Easy to fasten, staple, screw, nail and drill using conventional woodworking tools**
- **Ensures material efficiency with customised product dimensions**
- **Made of sustainable Nordic Wood and PEFC certified**
- **Environmentally friendly**
- **Kerto LVL (1 m³) contains stored carbon equivalent to 789 kg CO₂**

Approvals and design properties

Kerto LVL T-stud is CE marked and the design properties are determined according to standard EN 14374. The design properties given in the Declaration of Performance (DoP) are to be used for structural calculations with EN 1995 (Eurocode 5). The DoP documents can be downloaded from www.metsawood.com/dop.

T-stud has also approvals in Norway and Germany.

Kerto production is managed according to the principles of standard ISO 9001. The quality and the constancy of performance of the product are controlled by means of regular third party inspections and audits.

Standard sizes

Thickness (mm)	WIDTH (mm)			
	66	75	92	<200 mm
39	Kerto®	Kerto®	Kerto®	Kerto®
45	Kerto®	Kerto®	Kerto®	Kerto®

Other sizes are available on request.

Overall dimensions

	MINIMUM (mm)	MAXIMUM (mm)
Thickness	27	75
Width/height	40	200*
Length	2,000	16,000*

* Special widths and lengths are available on request.

Tolerances

	SIZE (mm)	MINIMUM (mm)	MAXIMUM (mm)
Thickness	≤ 27 mm	-1.0 mm	+1.0 mm
	27 < t ≤ 57 mm	-2.0 mm	+2.0 mm
	t > 57 mm	-3.0 mm	+3.0 mm
Width/height	< 400	-2.0 mm	+2.0 mm
	≥ 400	-0.5 %	+0.5 %
Length	All	-5.0 mm	+5.0 mm

In moisture content of 10 ± 2 %. Special tolerances are available on request.

Formaldehyde emissions

Determined according to EN 717-1, the amount of formaldehyde emitted by Kerto LVL falls far below the Class E1 requirement of ≤0.100 ppm, and also fulfils the most stringent requirements in the world (≤0.030 ppm). The formaldehyde emissions of Kerto LVL are approximately 0.018 ppm.

Further processing

Kerto LVL T-stud can be further processed in various ways according to end-use requirements.

Sanding	Optical sanding, 1 or 2 sided Calibrated sanding, 2 sided only
Edge profiling	Tongue and groove, half-lap
Machining	Machined to special size and shape, notches and holes
Temporary weather protection - up to width 610 mm	WeatherGuard
Treatment against mould	MouldGuard
Treatment against termites (Australia only)	H2S treatment

Packing

Products are packed in moisture-resistant plastic wrapping or packing hoods. Packages can be stored outside only temporarily. Longer-term storage is recommended under cover in dry conditions.

On request the products can be delivered without plastic wrapping. In this case products shall not be exposed to weather.

Further information

- Kerto LVL T-stud Declaration of Performance (www.metsawood.com/dop)
- Kerto Manual (www.metsawood.com/kertomanual)
- Kerto for Load Bearing Applications brochure

This leaflet is provided for information purposes only and no liability or responsibility of any kind is accepted by Metsä Wood or their representatives, although Metsä Wood has used reasonable efforts to verify the accuracy of any advice, recommendation or information. Metsä Wood reserves the right to alteration of its products, product information and product range without any notice.